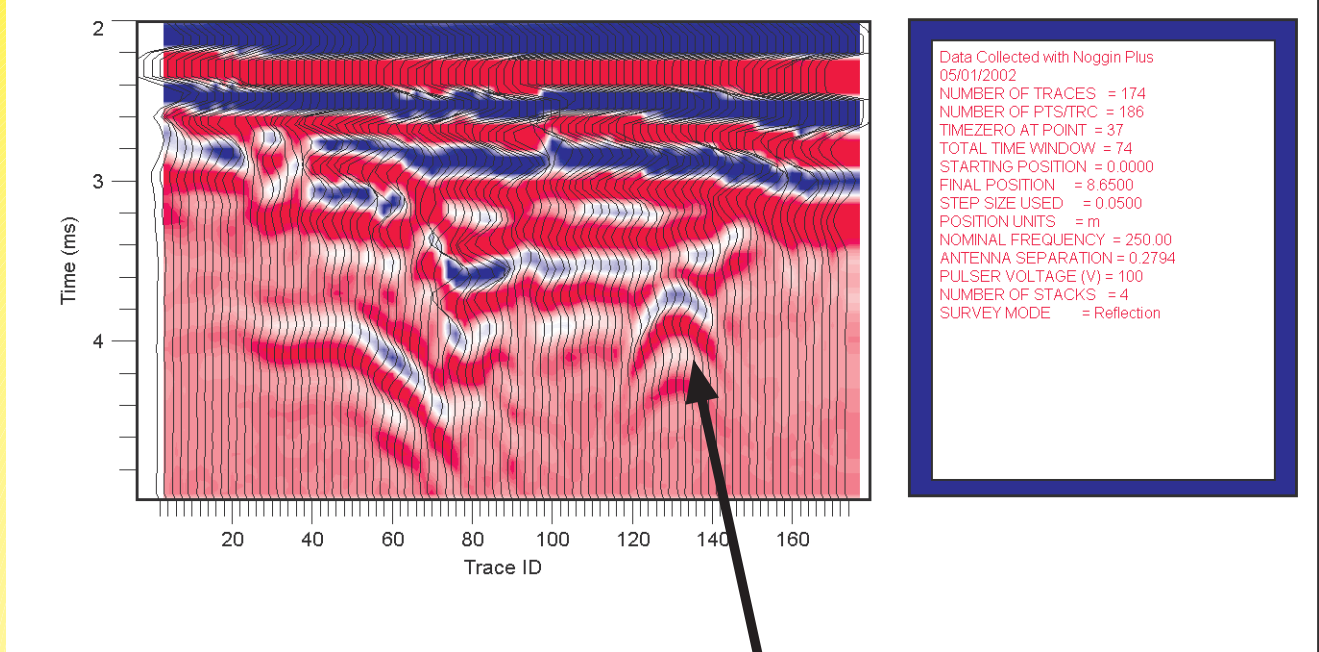


GPR Data Processing



Gas Line

- Affordable
- Dependable
- Easy to Use
- Field Proven
- 2-D and 3-D

*Seismic Processing Workshop*TM

 Parallel Geoscience Corporation

GPR PROCESSING

**Available for
Linux, MacOS, Windows 2000/NT/XP**

SPW for GPR is a full-featured GPR data processing system. The powerful and unique processing tools, which were developed for use in seismic processing, facilitate the rapid processing and evaluation of GPR data. Using SPW's innovative user interface, GPR data may be quickly and easily processed in the field or in the office. The full library of 2-D and 3-D capabilities is included.

The SPW GPR Processing Package includes the following tools:

Data Input :

- GSSI Radar Data Input
- Sensors & Software Input
- MALA Data Input

Filtering :

- Time-Variant Filters
- F-K Filtering
- Spatial Filtering

Attributes :

- Color Amplitude
- Instantaneous Amplitude
- Instantaneous Phase
- Instantaneous Frequency

Migrations :

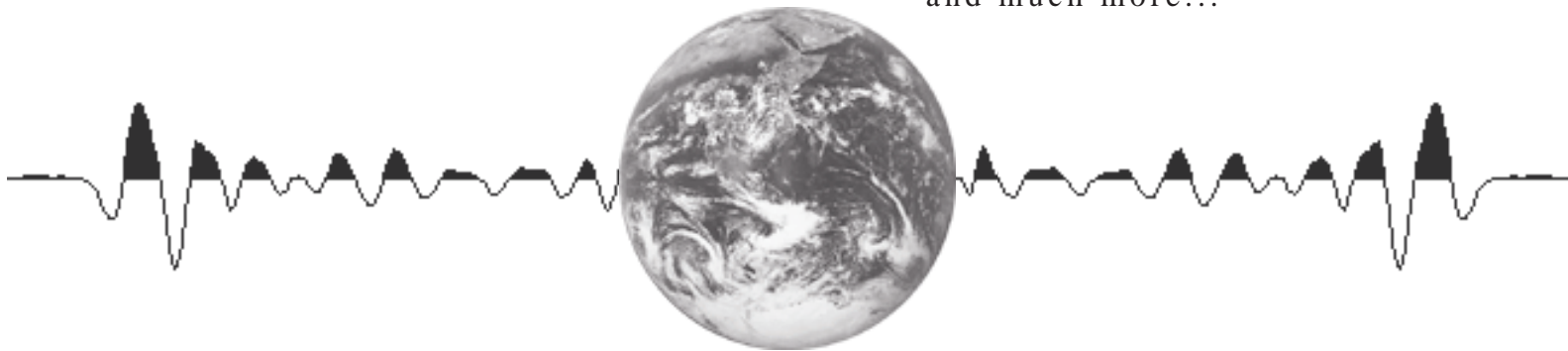
- F-K Time Migration
- Phase Shift Migration
- Split Step Depth Migration

Scaling :

- Time Variant AGC
- Trace Equalization
- Gain Application

Display :

- Wiggle with Fill
- Color Amplitude
- Color Attributes
- Side Label
- Filtering
- AGC
- and much more...



 **Parallel Geoscience Corporation**

Sales - Mike Loehrer
20932 Georgetown Street
California City, CA 93505 USA

Voice +1-760-373-8648
Fax +1-760-373-8148
E-Mail MLoehrer@parallelgeo.com

<http://www.parallelgeo.com>