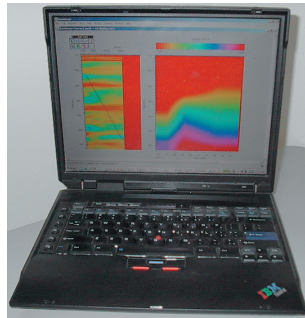


Affordable Seismic Software Solutions Since 1988

*Parallel
Seismic
Processing*



From the Notebook

To the Workstation



To the Supercomputer...



*Scalable solutions for
any size of project*

 PARALLEL
GEOSCIENCE

SPW Seismic Solutions

FlowChart

SpecPower

Executor

WE-PSDM

SeisViewer

IO-Utility

V-Calc

Parallel Geoscience Corporation has been providing seismic data processing software since 1988. Our company philosophy is to offer quality products at affordable prices with exceptional support. Our SPW product line includes Linux, Windows 2000/2003/XP products as well as our traditional Macintosh products. Custom software solutions and interpretive processing tools are available on all platforms. Please call, write, fax or e-mail us for further information.

» **The SPW™ System** - A fully interactive 2-D and 3-D seismic data processing system based on our popular flowchart user interface. From field tape handling to pre-stack migration, conventional or multi-component, SPW provides processing tools to meet your needs. The SPW Linux and PC seismic executor takes full advantage of multi-cpu systems and clusters. This client-server design allows for optimal use of inexpensive laptop, workstation and large cluster systems. SPW is a proven, field tested, reliable processing system.

» **WE-PSDM** - A state of the art wave equation pre-stack depth migration. Six wave field extrapolators are included in a single product. Multiple levels of optimization to get the highest level of performance from Linux clusters. Scalable from a single CPU system to hundreds of CPUs. WE-PSDM is a clearly superior imaging solution.

» **Tape Utility** - A high performance data analysis, copy, verify, and reformat program. Provides tools for decoding seismic data formats, performing instrument tests and analysis of problem tapes. SPW IO Utility uses the native SCSI interface and requires no tape device drivers.

» **SpecPower** - A spectral decomposition product developed as a cooperative effort with SeisCat - KJT Enterprises. The decomposition of the seismic trace data is achieved through a choice of Short Term Fourier Transform, Wavelet Transform, or an implementation of the Wigner-Ville Distribution (WVD). The frequency cubes resulting from these processes can potentially be used to map variations in bed thickness, geologic discontinuities and differentiation of fluids in the reservoir.

» **SPW Engineering** - The complete SPW system at a fraction of the cost. SPW Engineering is a smaller package capable of handling up to 150 channels per record and a maximum of 100,000 traces per dataset. SPW Engineering is optimized for quickly processing near surface high-resolution seismic surveys.

» **SPW GPR** - The SPW system modified to handle GPR data input formats with several special features for GPR data processing. SPW GPR is limited to radar data input but can be upgraded at any time. SPW GPR provides the tools for full processing of 2-D and 3-D ground penetrating radar data.

 **Parallel Geoscience Corporation**

43101 Ritter Road
Long Creek, OR 97856 USA
www.parallelgeo.com

Tel +1.541.421.3127
Fax +1.541.421.3128
sales@parallelgeo.com